

JAY•LOR®

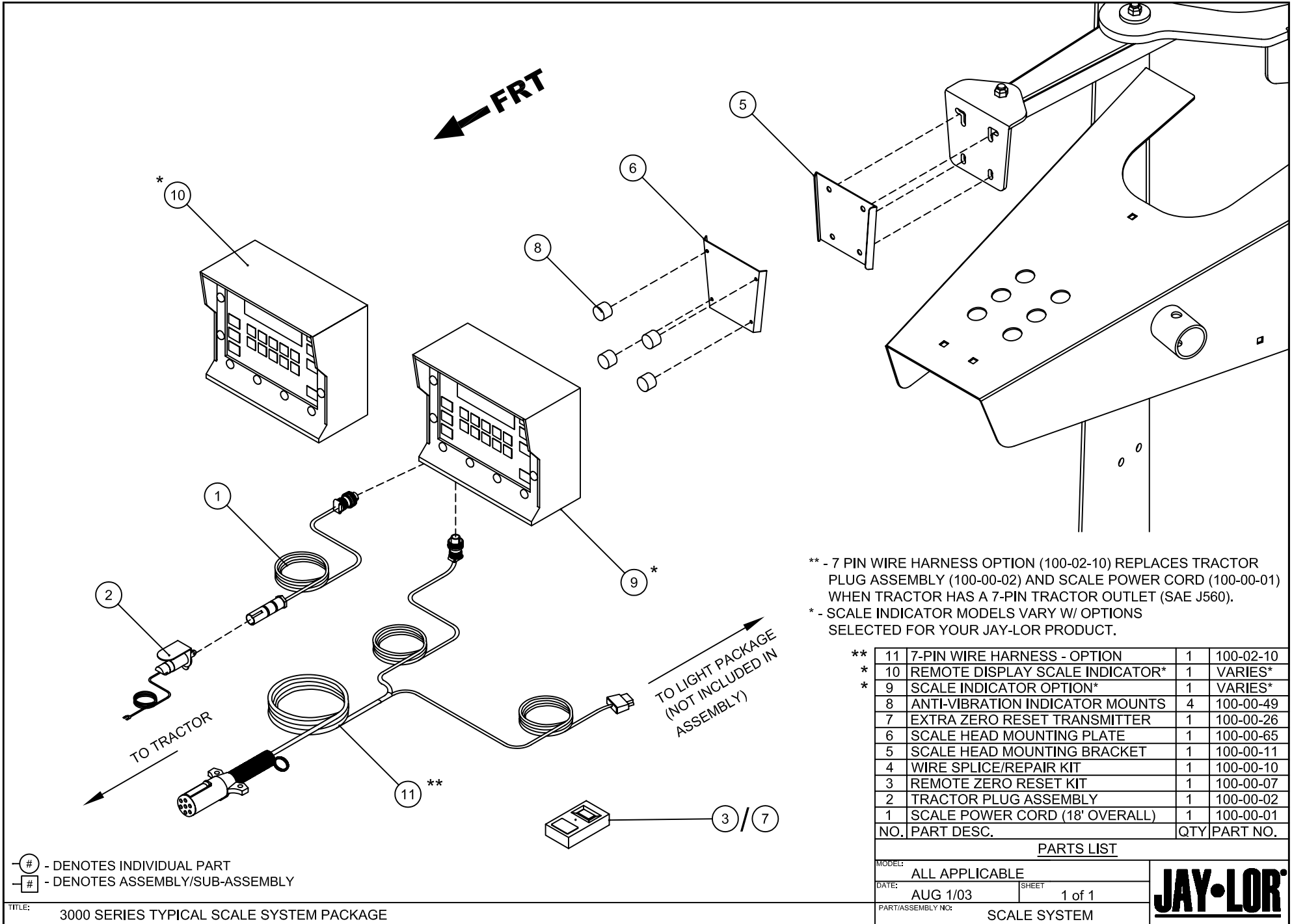
Cutter • Mixer • Feeder

10 – SCALES

“Putting the ‘Total’ into TMR”

JAY-LOR® Fabricating Inc.
RR # 2 Orton, Ontario, Canada, L0N 1N0 Tel: (519) 787-8058 Fax: (519) 787-7053

To Print this Section, Click Here



** - 7 PIN WIRE HARNESS OPTION (100-02-10) REPLACES TRACTOR PLUG ASSEMBLY (100-00-02) AND SCALE POWER CORD (100-00-01) WHEN TRACTOR HAS A 7-PIN TRACTOR OUTLET (SAE J560).

* - SCALE INDICATOR MODELS VARY W/ OPTIONS SELECTED FOR YOUR JAY-LOR PRODUCT.

NO.	PART DESC.	QTY	PART NO.
**	11 7-PIN WIRE HARNESS - OPTION	1	100-02-10
*	10 REMOTE DISPLAY SCALE INDICATOR*	1	VARIES*
*	9 SCALE INDICATOR OPTION*	1	VARIES*
	8 ANTI-VIBRATION INDICATOR MOUNTS	4	100-00-49
	7 EXTRA ZERO RESET TRANSMITTER	1	100-00-26
	6 SCALE HEAD MOUNTING PLATE	1	100-00-65
	5 SCALE HEAD MOUNTING BRACKET	1	100-00-11
	4 WIRE SPLICE/REPAIR KIT	1	100-00-10
	3 REMOTE ZERO RESET KIT	1	100-00-07
	2 TRACTOR PLUG ASSEMBLY	1	100-00-02
	1 SCALE POWER CORD (18' OVERALL)	1	100-00-01

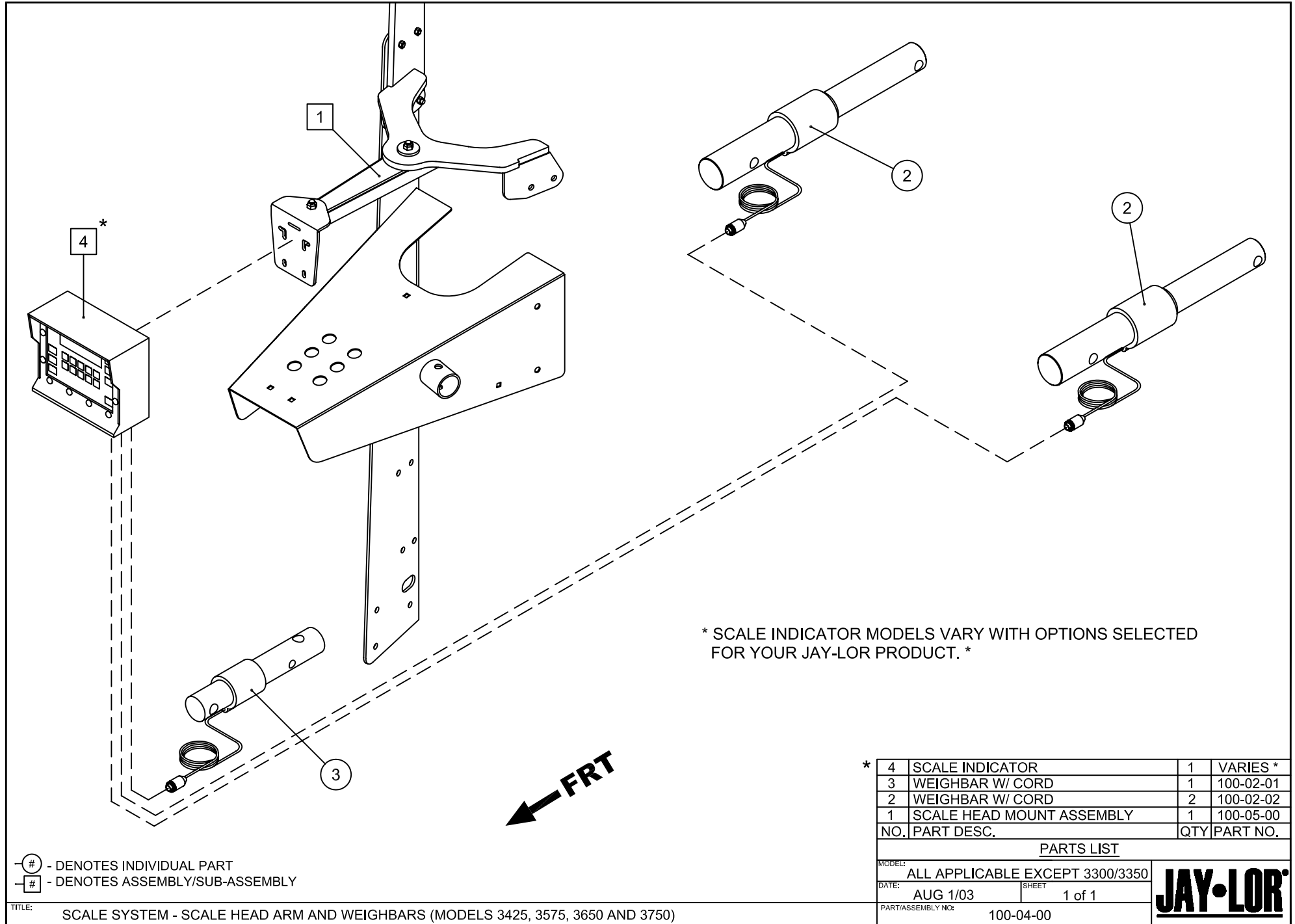
PARTS LIST

MODEL: ALL APPLICABLE	
DATE: AUG 1/03	SHEET 1 of 1
PART/ASSEMBLY NO: SCALE SYSTEM	



- DENOTES INDIVIDUAL PART
 # - DENOTES ASSEMBLY/SUB-ASSEMBLY

TITLE: 3000 SERIES TYPICAL SCALE SYSTEM PACKAGE



⊖ # - DENOTES INDIVIDUAL PART
 ⊖ # - DENOTES ASSEMBLY/SUB-ASSEMBLY

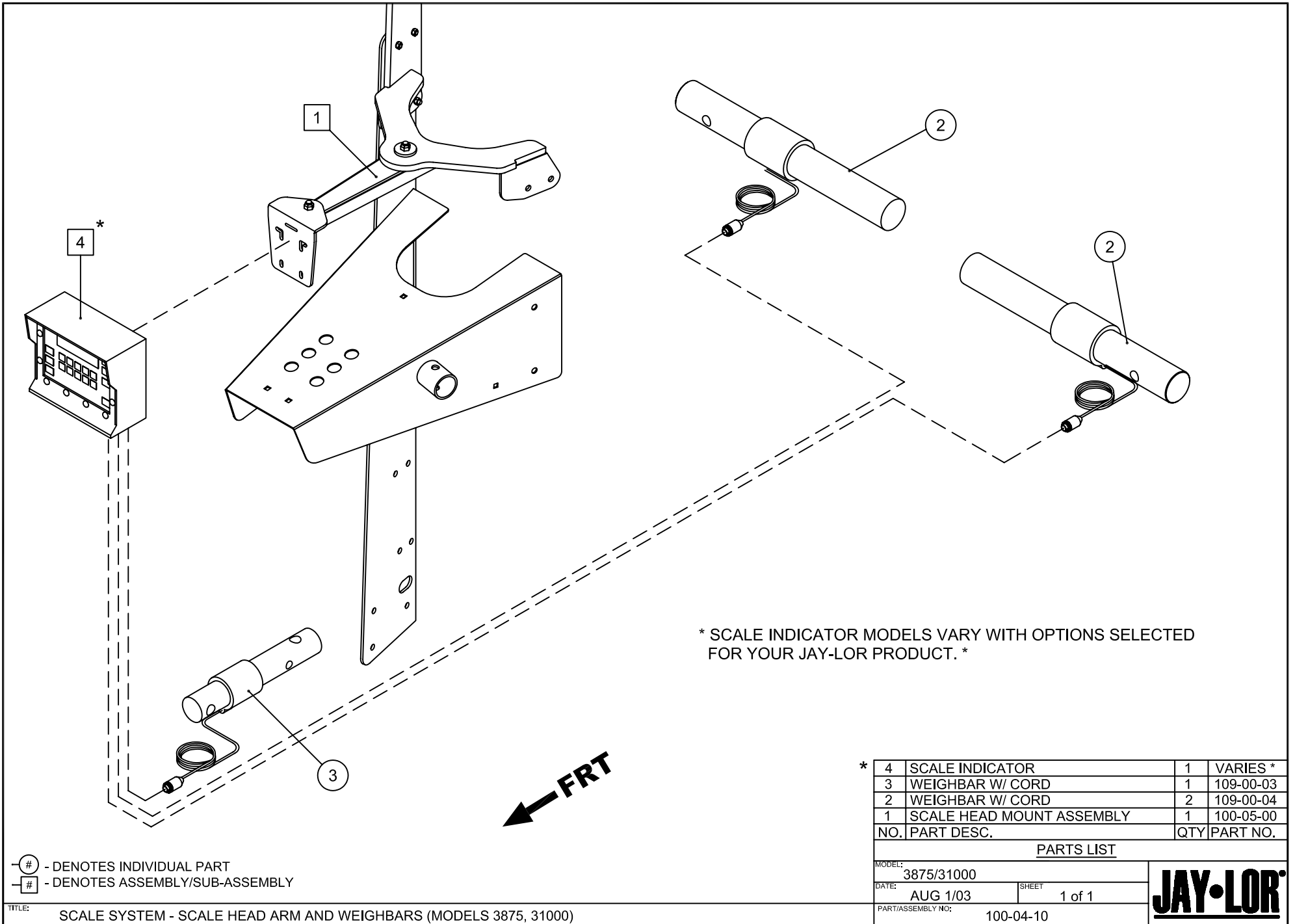
NO.	PART DESC.	QTY	PART NO.
4	SCALE INDICATOR	1	VARIES *
3	WEIGHBAR W/ CORD	1	100-02-01
2	WEIGHBAR W/ CORD	2	100-02-02
1	SCALE HEAD MOUNT ASSEMBLY	1	100-05-00

PARTS LIST

MODEL: ALL APPLICABLE EXCEPT 3300/3350	
DATE: AUG 1/03	SHEET 1 of 1
PART/ASSEMBLY NO: 100-04-00	



TITLE: SCALE SYSTEM - SCALE HEAD ARM AND WEIGHBARS (MODELS 3425, 3575, 3650 AND 3750)



⊖ # - DENOTES INDIVIDUAL PART
 ⊖ # - DENOTES ASSEMBLY/SUB-ASSEMBLY

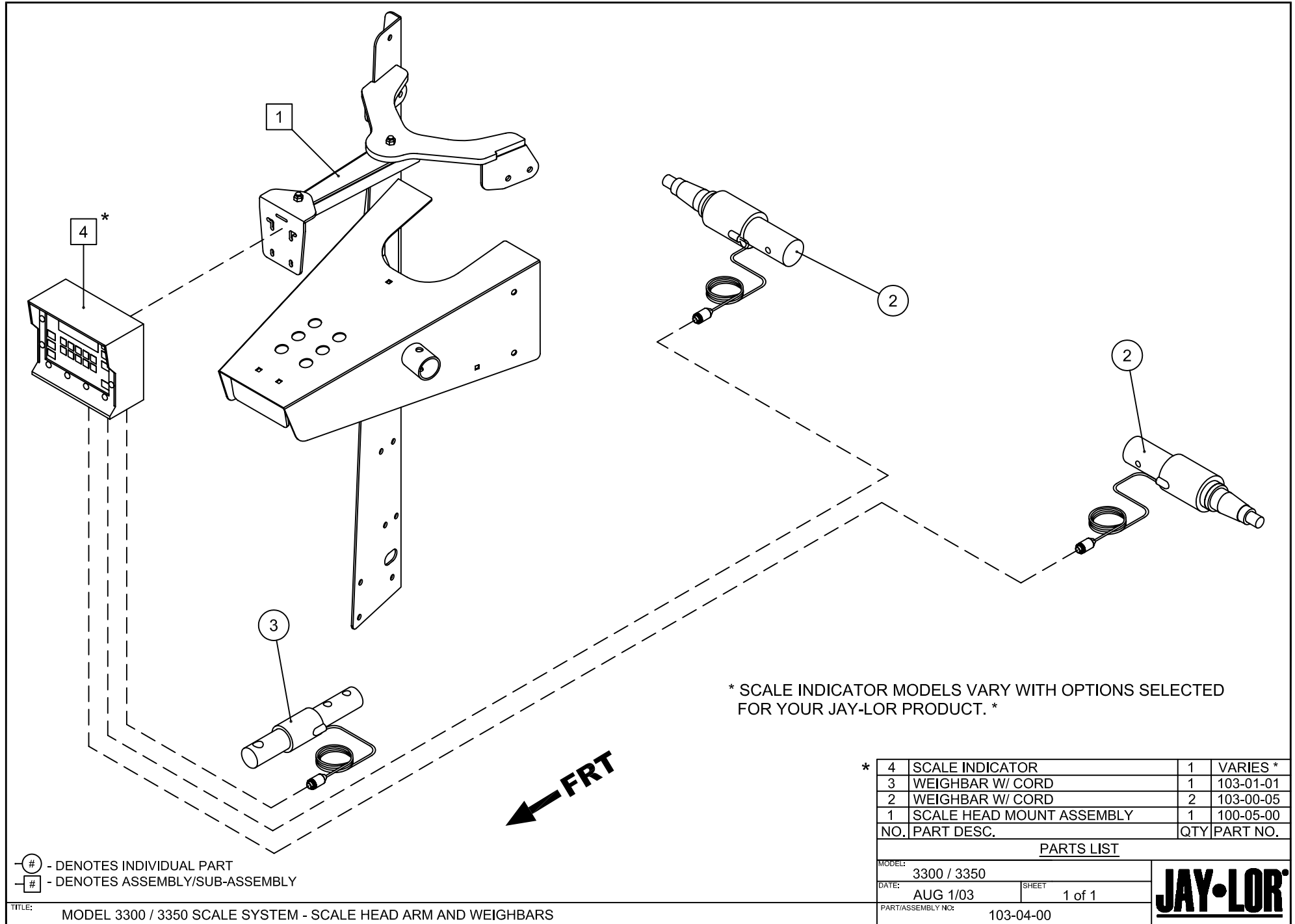
TITLE: SCALE SYSTEM - SCALE HEAD ARM AND WEIGHBARS (MODELS 3875, 31000)

NO.	PART DESC.	QTY	PART NO.
4	SCALE INDICATOR	1	VARIABLE *
3	WEIGHBAR W/ CORD	1	109-00-03
2	WEIGHBAR W/ CORD	2	109-00-04
1	SCALE HEAD MOUNT ASSEMBLY	1	100-05-00

PARTS LIST

MODEL: 3875/31000	
DATE: AUG 1/03	SHEET 1 of 1
PART/ASSEMBLY NO: 100-04-10	





(#) - DENOTES INDIVIDUAL PART
 [#] - DENOTES ASSEMBLY/SUB-ASSEMBLY

* SCALE INDICATOR MODELS VARY WITH OPTIONS SELECTED FOR YOUR JAY-LOR PRODUCT.*

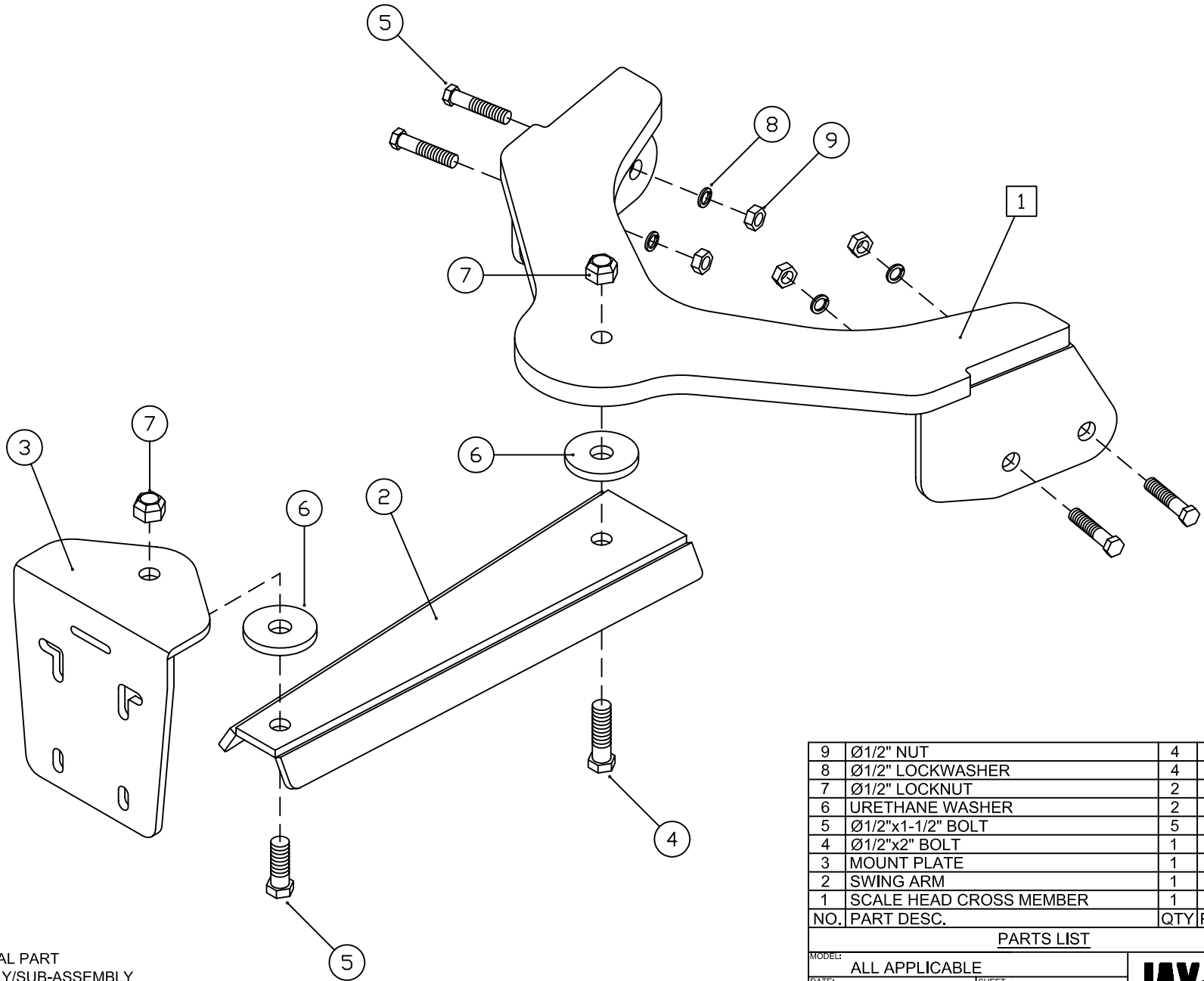
NO.	PART DESC.	QTY	PART NO.
4	SCALE INDICATOR	1	VARIABLE *
3	WEIGHBAR W/ CORD	1	103-01-01
2	WEIGHBAR W/ CORD	2	103-00-05
1	SCALE HEAD MOUNT ASSEMBLY	1	100-05-00

PARTS LIST

MODEL: 3300 / 3350	
DATE: AUG 1/03	SHEET 1 of 1
PART/ASSEMBLY NO: 103-04-00	



TITLE: MODEL 3300 / 3350 SCALE SYSTEM - SCALE HEAD ARM AND WEIGHBARS



⊖# - DENOTES INDIVIDUAL PART
 ⊖# - DENOTES ASSEMBLY/SUB-ASSEMBLY

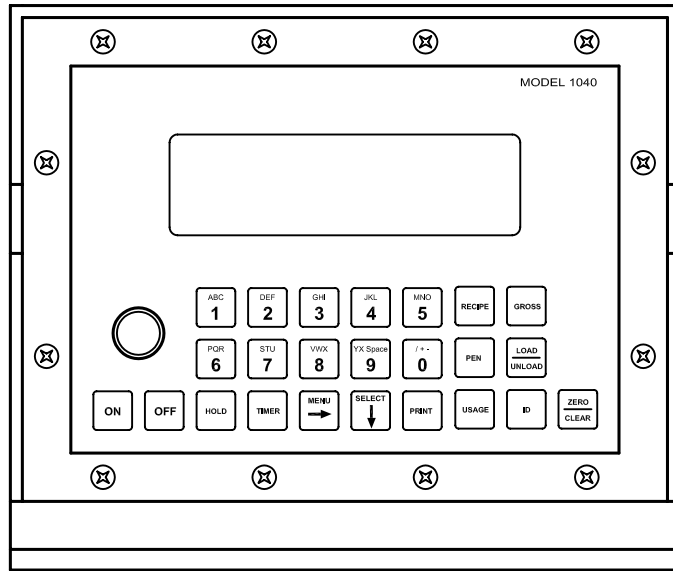
9	Ø1/2" NUT	4	
8	Ø1/2" LOCKWASHER	4	
7	Ø1/2" LOCKNUT	2	
6	URETHANE WASHER	2	
5	Ø1/2"x1-1/2" BOLT	5	
4	Ø1/2"x2" BOLT	1	
3	MOUNT PLATE	1	100-05-02
2	SWING ARM	1	100-05-01
1	SCALE HEAD CROSS MEMBER	1	100-05-03
NO.	PART DESC.	QTY	PART NO.

PARTS LIST

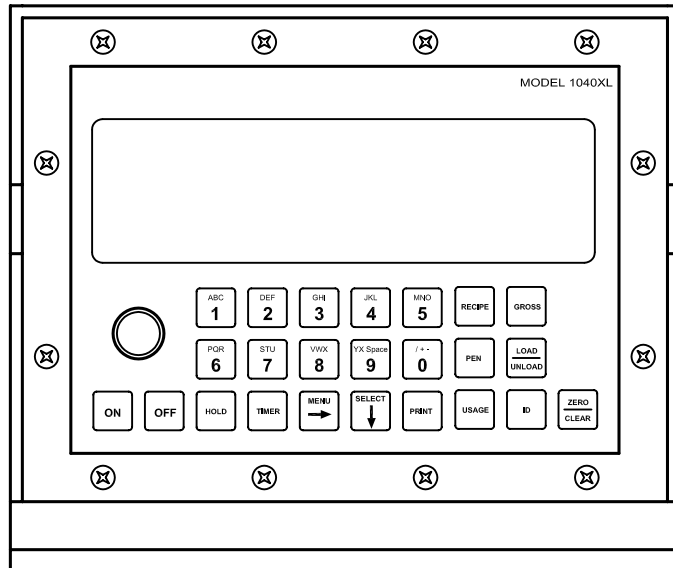
MODEL:	ALL APPLICABLE	
DATE:	AUG 1/03	SHEET 1 of 1
PART/ASSEMBLY NO.:	100-05-00	



TITLE: SCALE HEAD MOUNT ARM ASSEMBLY



MODEL1040 (#101-00-03)



MODEL1040xl (#101-00-01)

INSTRUCTIONS TO CONVERT WEIGH-TRONIX MODEL 1040/XL SCALE INDICATOR TO/FROM POUNDS TO/FROM KILOGRAMS.

A. VIEWING / EDITING CURRENT CONFIGURATION CODE.

1. PRESS AND HOLD THE [MENU] KEY FOR 3 BEEPS (3 SECONDS).
 - 1.1. "SET.PAS" IS DISPLAYED.
2. KEY IN [1040] USING THE NUMERIC KEYPAD.
 - 2.1. "****" IS DISPLAYED.
3. PRESS [SELECT] KEY;
 - 3.1. "CONFIG" IS DISPLAYED.
4. PRESS [SELECT] KEY;
 - 4.1. CURRENT CODE IS DIPLAYED.
TO ACCEPT THIS CODE SKIP TO STEP 8.
5. TO CHANGE THE CODE ENTER IN THE NEW CODE (SEE CHART BELOW);
 - 5.1. THE NEW CODE IS DISPLAYED.
6. PRESS [SELECT] KEY;
 - 6.1. "CONFIG" IS SHOWN.
7. PRESS [GROSS] KEY TO RETURN TO CORRESPONDING OPERATIONAL MODE.

CONFIGURATION CODES

MACHINE MODEL	LBS WITHOUT AUTOHOLD	LBS WITH AUTOHOLD	KG WITHOUT AUTOHOLD	KG WITH AUTOHOLD
3300 3350	9230	9232	9234	9236
3425, 3575, 3650, 3750	7230	7232	7234	7236
3875 31000	7320	7322	7324	7326

OPTIONS

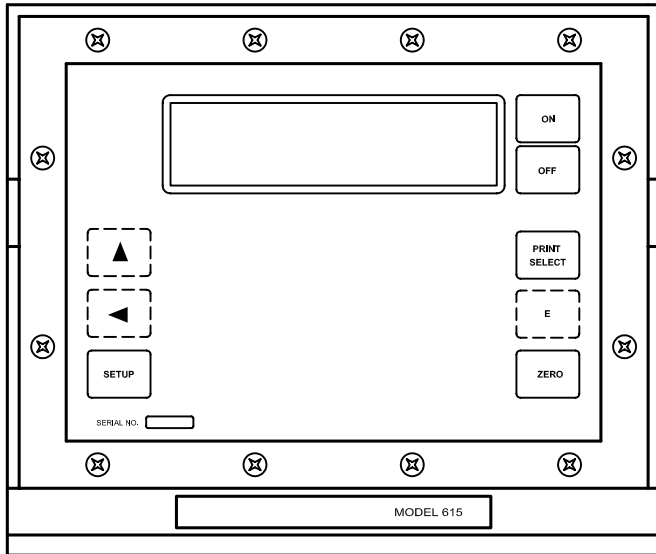
RD64M REMOTE DISPLAY - MIRROR MOUNT	101-00-07
MOUNTING KIT RD64M MIRROR MOUNT	101-00-08
RD64XL REMOTE INDICATOR	101-00-04
RD125-RF REMOTE INDICATOR (WIRELESS)	101-00-05
RCV-64 ZERO REMOTE KIT FOR 1040 INDIC'R	101-01-00
RS-232 PORT	100-00-23
DOT MATRIX PRINTER	100-00-21
WP-233 PRINTER	100-00-22
TRANSFER DATA SYSTEM KIT	103-00-09
EXTERNAL ALARM LIGHT	100-00-28
EXTERNAL ALARM HORN	100-00-15

⊗ - DENOTES INDIVIDUAL PART
 ⊞ - DENOTES ASSEMBLY/SUB-ASSEMBLY

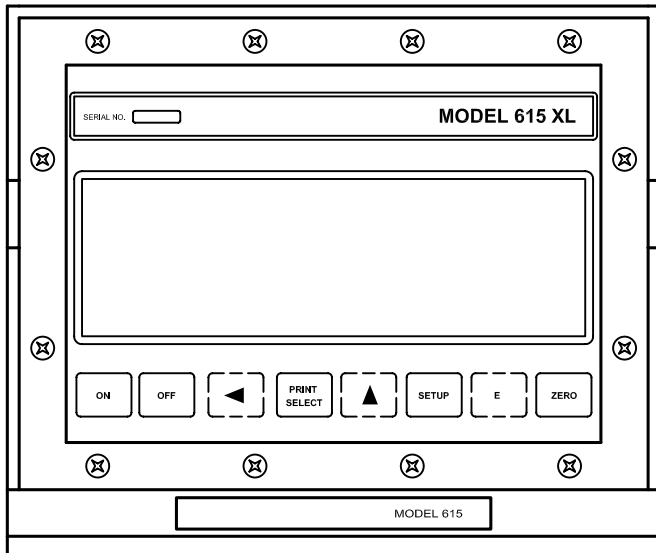
TITLE: WEIGH-TRONIX MODEL 1040 & 1040 XL FARM INDICATOR WITH 3 x 5 PIN CONNECTOR

MODEL: ALL APPLICABLE
 DATE: AUG 1/03 SHEET 1 of 1
 PART/ASSEMBLY NO: 101-00-03 / 101-00-01





MODEL 615 (#103-00-01)



MODEL 615xl (#103-00-02)

INSTRUCTIONS TO CONVERT WEIGH-TRONIX MODEL 615/XL SCALE INDICATOR TO/FROM POUNDS TO/FROM KILOGRAMS.

A. VIEWING / EDITING CURRENT CONFIGURATION CODE.

1. PRESS AND HOLD THE HIDDEN [E] KEY (APPROX. 5 SECS.).
 - 1.1. "615" IS DISPLAYED.
2. PRESS [SETUP] KEY;
 - 2.1. "CONF" IS DISPLAYED.
3. PRESS [PRINT/SELECT];
 - 3.1. CURRENT CODE IS DISPLAYED.
 - 3.2. TO ACCEPT THIS CODE SKIP TO STEP 8.
4. PRESS THE HIDDEN [UP ARROW] KEY;
 - 4.1. "0" IS DISPLAYED.
 - 4.2. PRESS THE HIDDEN [UP ARROW] KEY REPEATEDLY UNTIL THE DISPLAY SHOWS THE FIRST DIGIT OF THE DESIRED CONFIGURATION CODE (SEE CHART BELOW).
5. PRESS THE HIDDEN [LEFT ARROW] KEY;
 - 5.1. THE DISPLAY SHIFTS LEFT ONE DIGIT.
 - 5.2. SKIP TO STEP 6 TO ACCEPT THE "0".
6. PRESS THE HIDDEN [UP ARROW] KEY;
 - 6.1. "1" IS DISPLAYED IN THE RIGHT DIGIT PLACE HOLDER.
 - 6.2. PRESS THE HIDDEN [UP ARROW] KEY REPEATEDLY UNTIL THE DISPLAY SHOWS THE CORRECT NUMBER FOR THE ACTIVE DIGIT PLACE HOLDER OF THE DESIRED CONFIGURATION CODE.
7. REPEAT STEPS 5-6 UNTIL THE DESIRED CONFIGURATION CODE IS ENTERED.
8. PRESS [PRINT/SELECT] KEY;
 - 8.1. "CONF" IS DISPLAYED.
9. PRESS [ZERO] KEY TO EXIT CONFIGURATION MODE AND RETURN TO WEIGHING MODE OR PRESS [SETUP] TO SCROLL THROUGH CONFIGURATION OPTIONS.

CONFIGURATION CODES

MACHINE MODEL	LBS WITHOUT AUTOHOLD	LBS WITH AUTOHOLD	KG WITHOUT AUTOHOLD	KG WITH AUTOHOLD
3300 3350	9150	9151	9152	9153
3425, 3575, 3650, 3750	7230	7231	7232	7233
3875 31000	7320	7321	7322	7323

OPTIONS

RD712 REMOTE INDICATOR	100-00-03
RD712XL REMOTE INDICATOR	100-00-05
XM 710-L REMOTE ZERO TRANSMITTER	100-00-07
RS-232 PORT	100-00-23
DOT MATRIX PRINTER	100-00-21
WP-233 PRINTER	100-00-22

- ⊗ - DENOTES INDIVIDUAL PART
- ⊞ - DENOTES ASSEMBLY/SUB-ASSEMBLY

TITLE: WEIGH-TRONIX MODELS 615 & 615 XL FARM INDICATOR WITH 3 x 5 PIN CONNECTOR

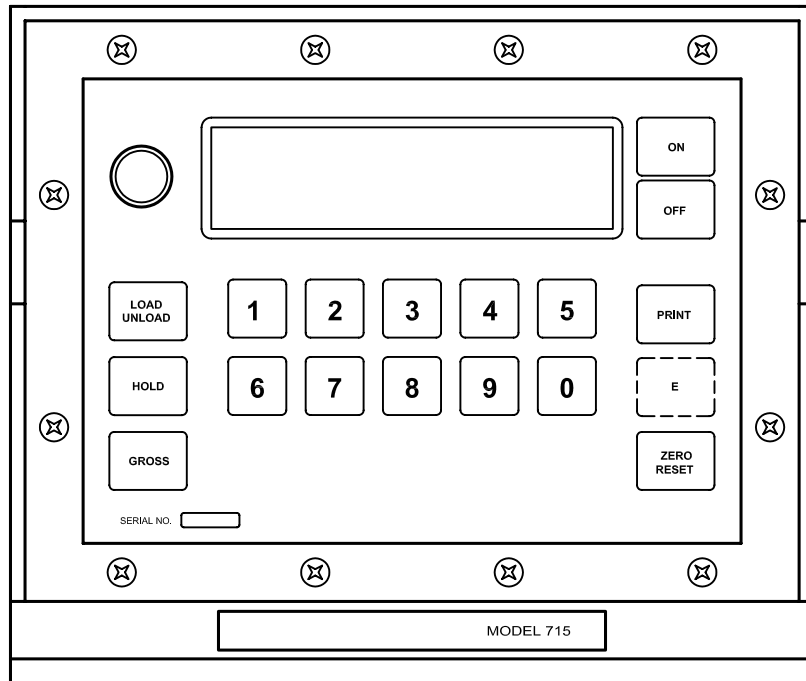
MODEL:	ALL APPLICABLE	
DATE:	AUG 1/03	SHEET 1 of 1
PART/ASSEMBLY NO.:	103-00-01 / 103-00-02	



INSTRUCTIONS TO CONVERT WEIGH-TRONIX MODEL 715 SCALE INDICATOR TO/FROM POUNDS TO/FROM KILOGRAMS.

A. VIEWING / EDITING CURRENT CONFIGURATION CODE.

1. KEY IN [715] (USING THE NUMERIC KEYPAD);
 - 1.1. "715" WILL BE DISPLAYED.
2. PRESS HIDDEN [E] KEY AND HOLD FOR TWO SECONDS. (THIS KEY IS LOCATED BETWEEN THE PRINT KEY AND THE ZERO RESET KEY);
 - 2.1. "715E" IS DISPLAYED.
3. PRESS [E] KEY;
 - 3.1. "E" IS DISPLAYED.
4. PRESS [LOAD/UNLOAD];
 - 4.1. CURRENT CODE IS DISPLAYED.
 - 4.2. TO ACCEPT THIS CODE SKIP TO STEP 8.
5. TO CHANGE THE CODE ENTER IN THE NEW CODE (SEE CHART BELOW);
 - 5.1. THE NEW CODE WILL BE DISPLAYED.
6. PRESS THE HIDDEN [E] KEY;
 - 6.1. "E" IS DISPLAYED.
7. PRESS [LOAD / UNLOAD];
 - 7.1. THE NEW CODE IS DISPLAYED.
8. PRESS [GROSS, HOLD, OR LOAD / UNLOAD] KEY TO RETURN TO CORRESPONDING OPERATIONAL MODE.



MODEL 715 (#103-00-03)

CONFIGURATION CODES

MACHINE MODEL	LBS WITHOUT AUTOHOLD	LBS WITH AUTOHOLD	KG WITHOUT AUTOHOLD	KG WITH AUTOHOLD
3300 3350	9150	9151	9152	9153
3425, 3575, 3650, 3750	7230	7231	7232	7233
3875 31000	7320	7321	7322	7323

OPTIONS

RD712 REMOTE INDICATOR	100-00-03
RD712XL REMOTE INDICATOR	100-00-05
XM 710-L REMOTE ZERO TRANSMITTER	100-00-07
RS-232 PORT	100-00-23
DOT MATRIX PRINTER	100-00-21
WP-233 PRINTER	100-00-22
EXTERNAL ALARM LIGHT	100-00-28
EXTERNAL ALARM HORN	100-00-15

⊖# - DENOTES INDIVIDUAL PART
 ⊖# - DENOTES ASSEMBLY/SUB-ASSEMBLY

TITLE: WEIGH-TRONIX MODEL 715 FARM INDICATOR WITH 3 x 5 PIN CONNECTOR

MODEL:	ALL APPLICABLE	
DATE:	AUG 1/03	SHEET 1 of 1
PART/ASSEMBLY NO.:	103-00-03	

JAY-LOR